

**WELCOME**



**Middle School**

**FUTURE WOLVES!**

Westglades Middle School

11000 Holmberg Road

Parkland, FL 33076

754-322-4800

[www.WestgladesMiddle.com](http://www.WestgladesMiddle.com)

Twitter: @wmswolves

Instagram: @wms\_wolves



School Hours: 9:15 am - 3:45 pm

Before Care: 7:00 am - 8:45 am

After Care: 3:45 pm - 6:00 pm

Early Release Day Hours: 9:15 am - 1:45 pm



Hello Future Wolves,

Although a bit puzzling, the transformation to middle school can be a very exciting and wonderful experience. You are leaving the elementary years and approaching one of the most dramatic periods in your life. You will grow in many ways: socially, emotionally, physically, and even intellectually. You will face challenges in your ability to handle your feelings with peers and with adults.

At Westglades Middle School, you will find many people who will help you meet these challenges. We hope that after you meet and get to know us, you will feel comfortable about coming to middle school. We encourage you to get involved and ask lots of questions as you embark on this new adventure!



### **MAIN**

754-322-4800  
754-322-4835 (Fax)

### **ABSENCE/TARDY**

754-322-4802

### **CAFETERIA**

754-322-4800 ext. 2050

### **REGISTRAR**

754-322-4830  
754-322-4885 (Fax)



Incoming 6th Grade Parents, (*Attending Westglades from Heron Heights, Park Trails, or Riverglades Elementary Schools*) please complete the WMS registration form and email, along with 2 proofs of residence, to the WMS Registrar at [\*\*WestgladesRegistrar@browardschools.com\*\*](mailto:WestgladesRegistrar@browardschools.com).

[\*\*DOWNLOAD THE FORM AT THIS LINK\*\*](#)

If you have any questions, please contact Sharon Schilling at 754-322-4800.

For all other new student registrations, click [\*\*HERE\*\*](#) for the BCPS School Locator and other information on how to join the Westglades family.



# WELCOME TO WESTGLADES

[VIDEO LINK](#)

By reviewing this interactive portfolio, parents and students will find important transition information that will help you to prepare for middle school. When you see the blue video recorder, there will be an interactive video for you to view. If you have further questions about the programs, you can email the school directly. Department emails are included throughout this presentation.



[westgladesmiddle.com](http://westgladesmiddle.com)

**-Westglades Middle School opened in August of 2002.**

-Royal Blue and Gold are our school colors.

**-The Wolf is our school mascot.**

-We are an "A" School.

**-Proud to be the Top Rated Middle School in Broward County.**

-Recipients of The Five Star School and Golden School Awards.

**-We are on Social Media: @WMSWolves & @WMS\_WOLVES.**

-Announcements, [Newsletters](#), and other important information can be found daily on our website, [WestgladesMiddle.com](http://WestgladesMiddle.com).

**-In 2018, we were featured on [NBC 4's "Brag About Your School."](#)**

Anime  
Band  
Basketball  
Best Buddies  
Cheerleading  
Chess  
Creative Writing  
Crime Watch  
Crochet  
Cross Country  
Dance  
Deca in the Middle  
Drama/Jr. Thespians  
Debate  
E-Sports  
FFEA  
First Priority  
Flag Football  
Future Veterinarians



Gear Girls  
Golf  
Kindness Matters  
Multicultural  
Math  
NJHS  
Orchestra  
Robotics  
SADD  
Samaritan 365  
Science/SECME  
Sign Language  
Soccer  
Student Government  
Track and Field  
Volleyball  
Wolfington Post  
Wolf Watch News



CHEERLEADING



**TRACK & FIELD**



GOLF



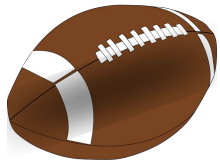
# ATHLETICS

[VIDEO LINK](#)

Athletic Director PJ Battaglia

[paul.battaglia@browardschools.com](mailto:paul.battaglia@browardschools.com)

**FLAG FOOTBALL**



SOCCER



VOLLEYBALL

**CROSS COUNTRY**





Although Westglades is bigger than most elementary schools, it will not take students long to get to know their way around and feel comfortable. Westglades Middle School strives to provide an environment that protects student's health, safety, and civil rights. For that reason, we have made, and continue to make, enhancements to security. Some of those enhancements include:

**-ID badges required by students and staff**

-Locking mechanisms added to strategic entrances

**-Mirrored laminate added to strategic windows**

-Security cameras added

**-First aid stop the bleed kits in each classroom and training for faculty and community**

-Additional security position hired and an additional law enforcement position (Total of 5 security positions and 2 law enforcement officers)

**-Parking decals for staff**

-Hero software program to track and reward positive behaviors

**-Updated intercom system and speakers added to the inner and outer hallways.**

-Added three school wide programs aimed at maintaining a school climate less susceptible to harassment, bullying and violence.



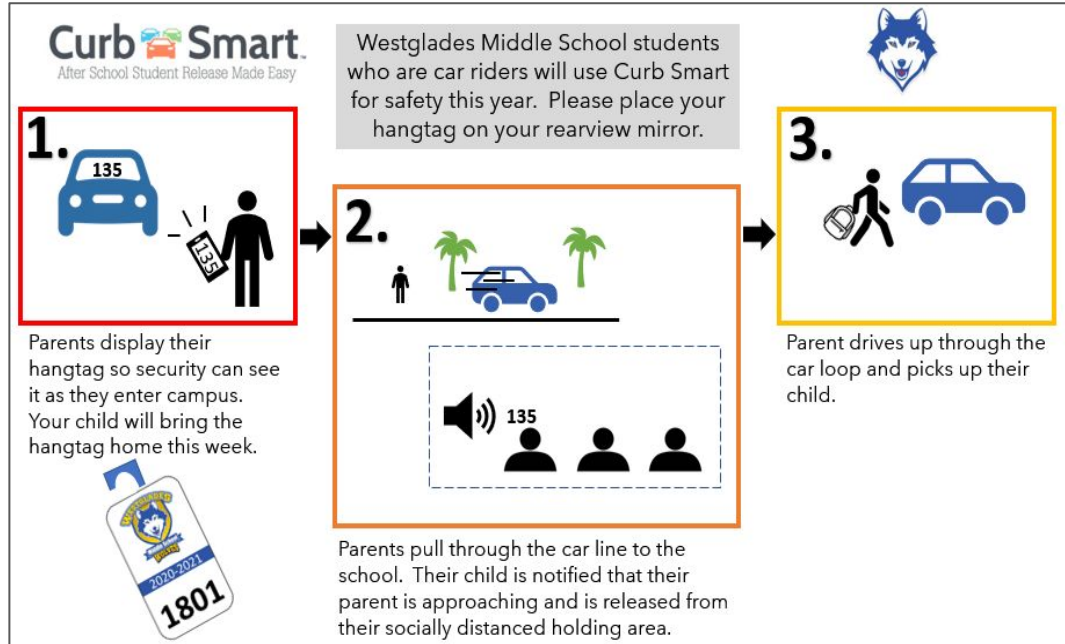


Busing is provided by the Broward County Transportation Department for students living 2 or more miles from Westglades Middle School. Those that meet the requirements will be issued a bus card by the Department of Transportation that must be returned to the student's bus driver prior to riding the school bus. Please direct bus questions to North Area Transportation at 754-321-4000.

Students riding bikes to school must cross at the designated crosswalk. A helmet is required by Florida State law. All bikes should be individually locked up in the bike corral.

Students walking to school must remain on the sidewalks and cross at designated crosswalks.

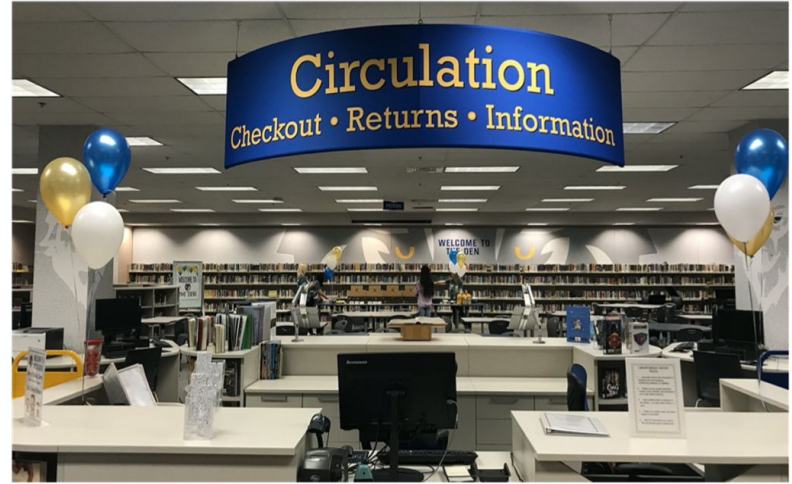
We use [Curb Safe](#) at Westglades. Car riders must be dropped off and picked up on the east side (closest to Stoneman Douglas) of the school. To avoid a safety hazard in the car loop, please refrain from using mobile devices and pay attention to Administrative direction when entering this area. Additionally, patience and cooperation are needed to ensure the safety of every child in this area.





[westgladesmiddle.com](http://westgladesmiddle.com)

- 1. What time does the building open?** The Main Office and phones open at 8:45am.
- 2. I need to make a telephone call, where is the telephone?** Visit the Main Office.
- 3. My child is absent, what do I do?** Call the Attendance Line at 754-322-4802 and/or send in written documentation.
- 4. I feel sick, where do I go?** The clinic, located in the Main Office.
- 5. I have a concern with one of my child's teachers, who can help me with my concern?** Your grade level Guidance Counselor or Administrator.
- 6. If my child has to take special medication, what do I need to do?** You must have an authorized Medication Form completed by a Physician and medication will be locked up in the clinic.
- 7. If I lose something, where do I look for it?** There is a Lost and Found in the cafeteria. Lost electronic items are kept in the Main Office.
- 8. How do I buy lunch?** [Myschoolbucks.com](http://Myschoolbucks.com) is the Broward County Public Schools online payment portal designed to allow parents to easily manage and add funds to their child's lunch account. The system allows parents to view food selection.



In 2018, Westglades Middle School completed a remodel of the Media Center. The new Media Center is a hub for research and a great place for students to visit, collaborate, and work in different subjects using a variety of new media technology tools. The space also includes a mix of new and exciting furniture ranging from cafe tables to lounge furniture.

Our students love their visits to [The Den!](#)

The [Westglades Middle School Guidance Department](#) has a counselor for each grade level. The Guidance Department is responsible for scheduling and class changes, conflict resolution, progress reports, grade concerns and parent/teacher conferences. Counselors also handle special program placements and tutoring needs. While counselors used to handle testing, we now have a Testing Coordinator on staff and our Registrar handles student transcript requests.

If a student has a Guidance related concern, a Guidance Request Form should be completed by the student and submitted to the Guidance Office. The forms are available in the Main Office. Parents should monitor student progress and check grades regularly on Pinnacle. Pinnacle may be accessed on [WestgladesMiddle.com](#). Report Cards are issued four times a year, every nine weeks. The first three are sent home with the student and the last one is mailed home approximately two weeks after the last day of school.



#### MIDDLE SCHOOL GRADING SCALE:

<b>A</b>	<b>90-100</b>
<b>B+</b>	<b>87-89</b>
<b>B</b>	<b>86-80</b>
<b>C+</b>	<b>77-79</b>
<b>C</b>	<b>70-76</b>
<b>D+</b>	<b>69-67</b>
<b>D</b>	<b>60-66</b>
<b>F</b>	<b>59-0</b>



# DAY IN THE LIFE

[VIDEO LINK](#)



# CURRICULUM

[VIDEO LINK](#)

## 6th GRADE

Assistant Principal: Shaante Collie

[Shante.Collie@browardschools.com](mailto:Shante.Collie@browardschools.com)

Guidance Counselor: Takeacea Mitchell

[Takeacea.Mitchell@browardschools.com](mailto:Takeacea.Mitchell@browardschools.com)

## PRINCIPAL

Matthew Bianchi

[Matthew.Bianchi@browardschools.com](mailto:Matthew.Bianchi@browardschools.com)

## 7th GRADE

Assistant Principal: Shari Schwartz

[Shari.Schwartz@browardschools.com](mailto:Shari.Schwartz@browardschools.com)

Guidance Counselor: Christine Wilson

[Christine.Wilson@browardschools.com](mailto:Christine.Wilson@browardschools.com)

## 8th GRADE

Assistant Principal: Jon LaRosa

[Jon.LaRosa@browardschools.com](mailto:Jon.LaRosa@browardschools.com)

Guidance Counselor: Suzanne Desrosiers

[Suzanne.Desrosiers@browardschools.com](mailto:Suzanne.Desrosiers@browardschools.com)

## ESE

ESE SPecialist: Dione Reed

[Dione.Reed@browardschools.com](mailto:Dione.Reed@browardschools.com)

ESE Clerical: Ellen Gozansky

[Ellen.Gozansky@browardschools.com](mailto:Ellen.Gozansky@browardschools.com)

## REGISTRAR

Sharon Schilling

[Sharon.Schilling@browardschools.com](mailto:Sharon.Schilling@browardschools.com)

- \*Show your child that you are interested.
- \*Encourage your child to do their best.
- \*Get to know your child's friends.
- \*Know your child's teachers.

- \*Have realistic goals and expectations for your child.
- \*Encourage your child to ask for help when needed.
- \*Help your child to accept and like themselves.
- \*Check your child's homework and agenda book.

- \*Provide your child with an appropriate place to study.
- \*Ask to see returned papers and graded assignments.
- \*Encourage your child to participate in a club or activity to meet new friends.
- \*Make encouraging, not discouraging remarks and stay positive.

**See you soon Future Wolves!**



[westgladesmiddle.com](http://westgladesmiddle.com)